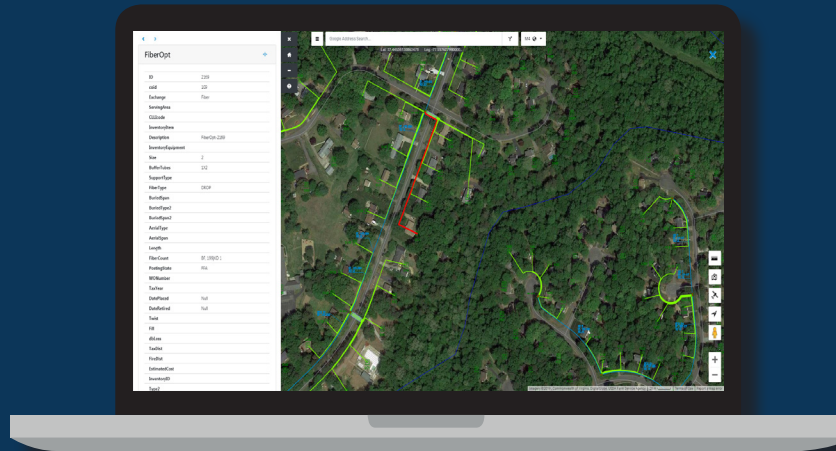




M4 WEB CONSOLE

Remotely navigating and analyzing data is easier than ever before.



Features

- Provide view-only network maps to resources outside of engineering
- Navigate & analyze map data via a web browser
- Configure menus to optimize role-specific functionality
- Create spatial queries to find trends in specific areas
- Use Google Maps to view satellite overlay
- Perform basic engineering actions
- Measure distances quickly and easily

Benefits

- Access information at anytime, from anywhere with an internet connection
- Quickly find plant information through searches & visual representation
- Visualize your own systems' data on the map
- Aerial views with Google Maps, & familiar interfaces for finding locations
- View real-time facility & network status
- Save time with quick, accurate driving directions to your next destination

Overview

M4 Web Console brings your M4 data into a web viewer, where you can access it from anywhere! Easily and efficiently search for data, view the information and verify those records—all in one place. M4 Web Console can also display other M4 modules' information including plant, customer locations and visual graphic reports.

38%
*Average time
saved per day for
technicians using M4*